



# Development of a Culturally Sustainable Universal Admissions Interface for First-Generation College Students

Farhan Ahmed, Grace Almgren, Deshaela Outing, Anasilvia Salazar, Ezequiel Aleman, Kimberly Zarecor Ph.D.

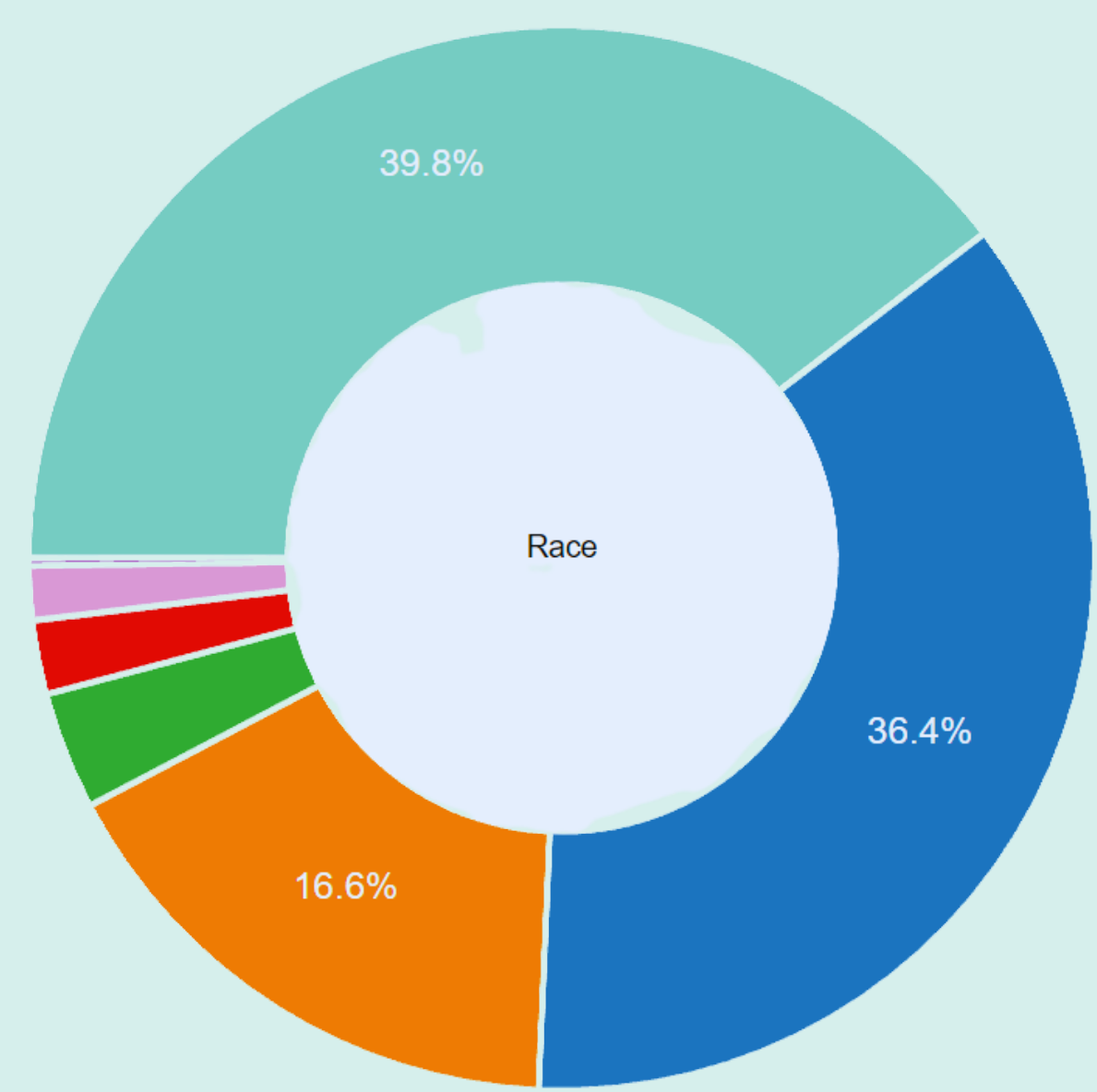
## Purpose

The project's purpose is to design a culturally sustainable web-based interface that will utilize community assets to empower high school students in the college admissions process.

## Problem

- The college application process is complex and may require mentorship to be understood.
- Cultural and language barriers make the admissions process less accessible.
- Not all school systems are equipped to support and guide students through college admissions.

### Storm Lake Demographics



■ White 
 ■ Black or African American 
 ■ American Indian and Alaska Native 
 ■ Asian 
 ■ Native Hawaiian and Other Pacific Islander 
 ■ Two or More Races 
 ■ Tot. Hispanic

## Storm Lake Context

- Population: 11,400 (1)
- Growing midwestern town because of low-skilled worker demand.
- Multilingual population: over 50%
  - English
  - Spanish
  - Asian and Pacific Island Languages. (1)
- Bachelor Degree or Higher: 16.3% (2)

## Prototype

**Customizable Journey Map**  
View a typical college application journey and create their own.

**Students Advice**  
Guidance from community members, college students, and organizations.

**Globe Icon**  
Easy, translatable statements for students' family.

**Customizable To Do List**  
Break down the college admissions process into achievable steps.

**Encouragement Button**  
Receive encouragement throughout their journey.

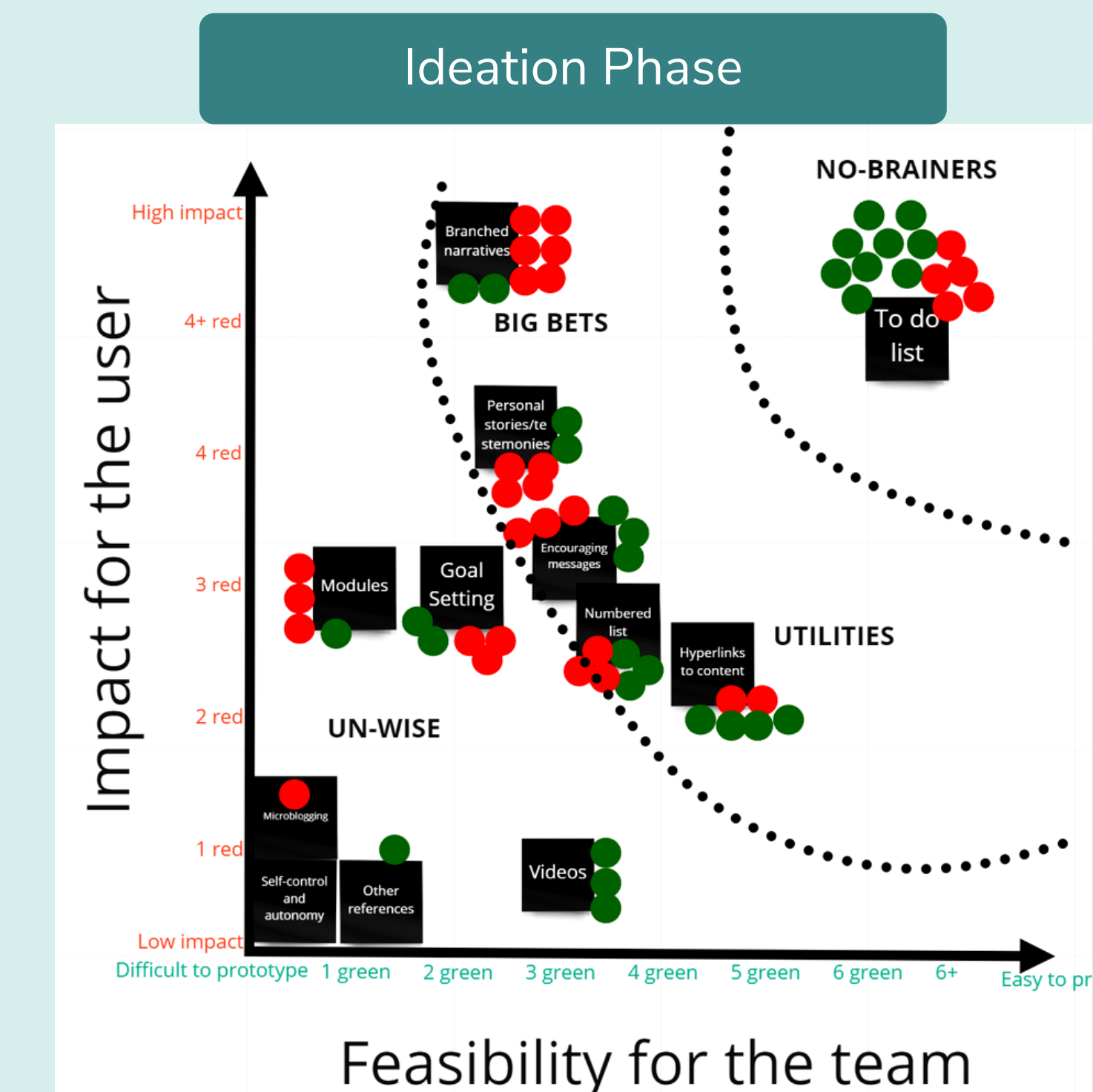
## Community

- Met with Community Stakeholders.
- Received positive feedback on the prototype
  - Advice page was well received.
- Participated in a mapping exercise
  - Mapped areas where learning occurred in Storm Lake.

## Design Takeaways

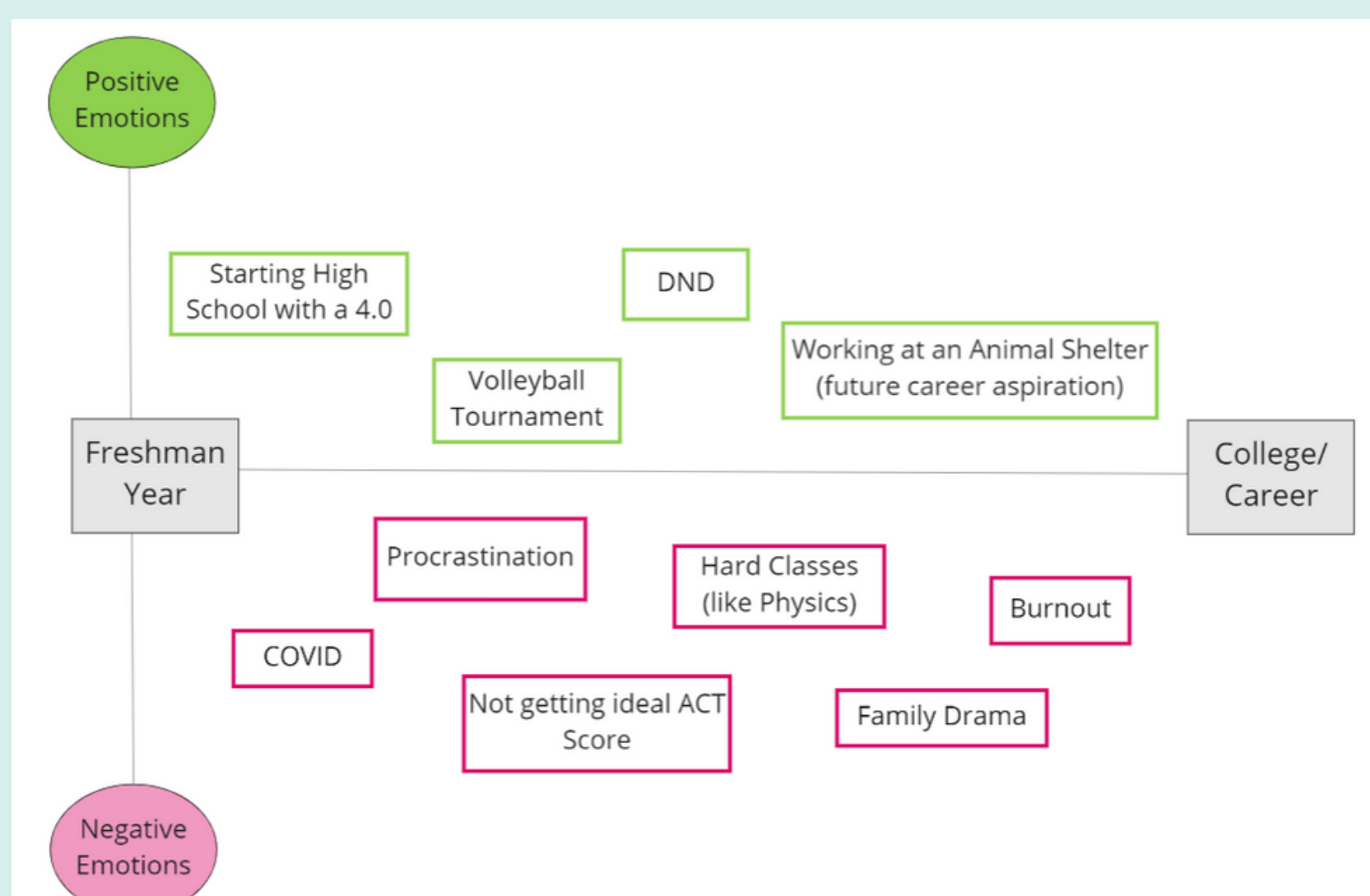


- Cultural Sustainability: Utilize the knowledge of the Storm Lake community.
- Language Accessibility: Usable for speakers of other languages.
- Growth Mindset: Encourage the college admissions experience to be a learning opportunity.



## Empathy Workshop

### Journey Map



Students marked high school events based on emotions and when it occurred (image adapted from original artifacts).

### Map of Assets

Resources that Worked	Resources that Did Not Work	Resources that They Wish they Had
Good Teachers, College Visits, FAFSA, Extra-curricular Activities, Beginning Welding Class, SIRS Issues Researcher, Video Driven Instructions, Financial Literacy, Quizlet, Offers the school gave, Dual-enrollment	Pressure from Family, Emotional Tests, Homework, Required Classes, Bias and inequality, Video Driven Instructions	Motivation, Information about Scholarships, Info on how school is structured, Advice, How to prepare for your career/life after school, Hands on Career Prep, Constant Feedback, Creative Expression, Help from teachers when looking for colleges, More people to connect with in STEM

Students evaluated current assets in their community and discussed resources that they wish they had (image adapted from original artifacts).

## Future Work

- Apply for a 4-year grant with Storm Lake.
- Iterate upon the prototype and maintain design takeaways.
- Create an active website for the community to use and contribute to.

## Sources

- (1) World Population Review. (n.d.). Storm Lake, Iowa population 2022. Storm Lake, Iowa Population 2022 (Demographics, Maps, Graphs). Retrieved July 29, 2022, from <https://worldpopulationreview.com/us-cities/storm-lake-ia-population>
- (2) Citytowninfo.com. (n.d.). Storm Lake, Iowa. Citytowninfo.com. Retrieved July 29, 2022, from <https://www.citytowninfo.com/places/iowa/storm-lake>